

Cepex panel mounted receptacle SCHUKO®

Part no. 4981

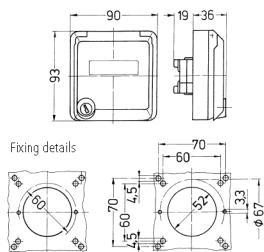


- screw terminals
- with labelling field
- with safety lock
- two keys
- cannot be dismantled when locked
- on request with identical locks
- suitable for installation in cable ducts and columns
- with identical locks: part no + index G

Technical specifications

Ampere	16 A
Poles	2 p+E
Voltage	230 V
Hertz	50-60 Hz
Protection type	IP 44
Shutter	false
Weight	150 g
Declaration of Conformity	RU,EAC (Zwangszulassung)

Drawing



Drawing
1 MB 305
Dim. in mm